



#3 Rose Berry - CLEARANCE



#3 Rose Berry - CLEARANCE

Model number: 57GMS28643BH19

3 beds • 2 baths • 1792 sq.ft. • 28' width • 64' depth

Our home building facilities invest in continuous product and process improvements. Plans, dimensions, features, materials, specifications and availability are subject to change without notice or obligation. Renderings and floor plans are representative likenesses of our homes and may differ from the actual homes. We invite you to tour a Home Center near you and inspect the highest value in quality housing available or call (704) 984-6606 to speak with a Home Consultant. Copyright 2017, CMH. All rights reserved.

<https://www.claytonfactoryoutletalbemarle.com>

**CLAYTON HOMES-
ALBEMARLE**

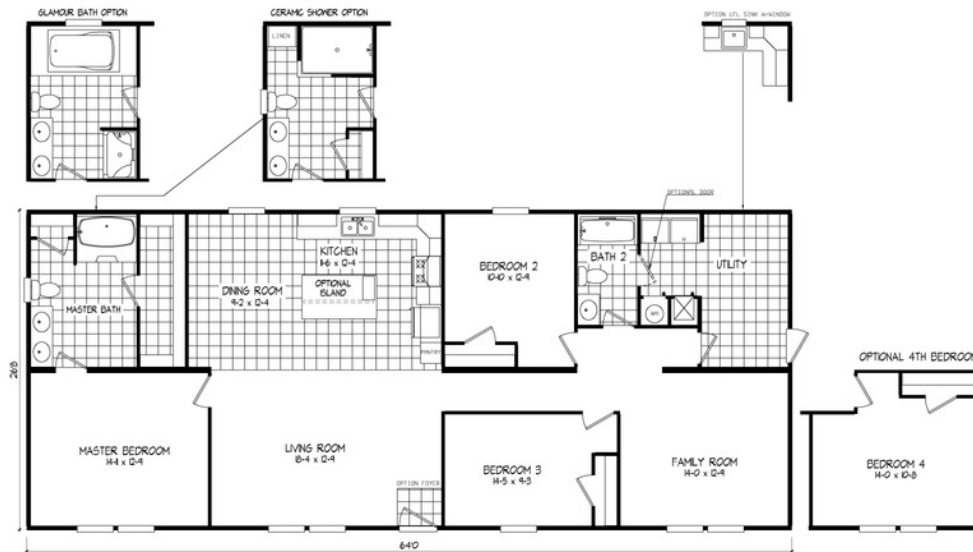
**1468 HWY 52 NORTH
ALBEMARLE, NC 28001**

Monday - Thursday: 9am - 6pm
Friday: 9am - 6pm
Saturday: 9am - 5pm
Sunday: Closed

(704) 984-6606



#3 Rose Berry - CLEARANCE



#3 Rose Berry - CLEARANCE

Model number: 57GMS28643BH19

3 beds • 2 baths • 1792 sq.ft. • 28' width • 64' depth

Our home building facilities invest in continuous product and process improvements. Plans, dimensions, features, materials, specifications and availability are subject to change without notice or obligation. Renderings and floor plans are representative likenesses of our homes and may differ from the actual homes. We invite you to tour a Home Center near you and inspect the highest value in quality housing available or call (704) 984-6606 to speak with a Home Consultant. Copyright 2017, CMH. All rights reserved.

<https://www.claytonfactoryoutletalbemarle.com>

CLAYTON HOMES-
ALBEMARLE

1468 HWY 52 NORTH
ALBEMARLE, NC 28001

Monday - Thursday: 9am - 6pm

Friday: 9am - 6pm

Saturday: 9am - 5pm

Sunday: Closed

(704) 984-6606